

ServiceListBoundary

(LoST Extension)

draft-wolf-ecrit-lost-servicelistboundary-01

IETF 75, Aug 2009, Stockholm, Sweden

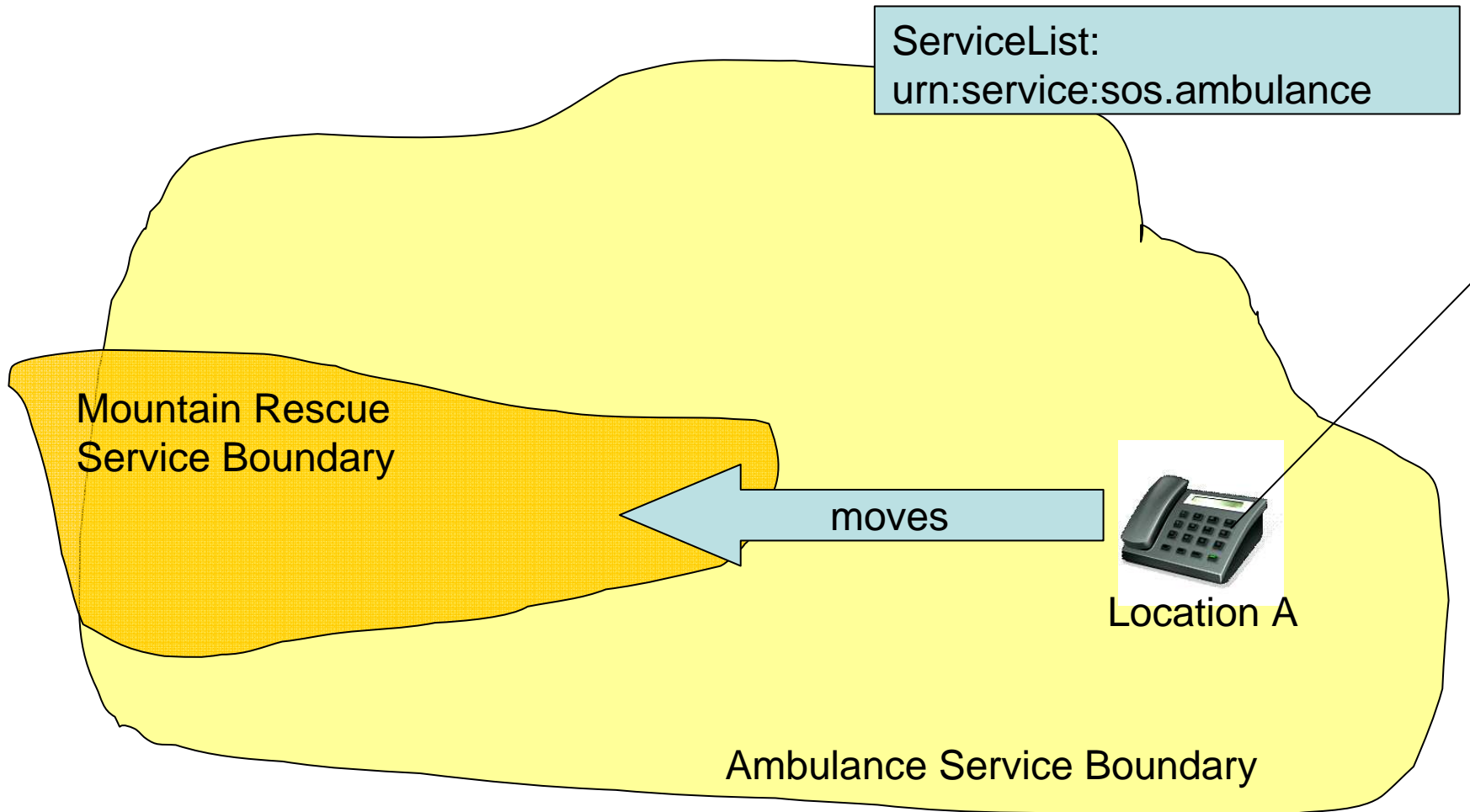
Author: Karl Heinz Wolf <karlheinz.wolf @ nic.at>

Presentation: Alex Mayrhofer <alexander.mayrhofer @ nic.at>
nic.at GmbH

Problem Statement

- <listServicesByLocation> provides a list of all services for a location
- **Problem:** The area for which that service list is valid is unknown
 - When to perform a new <listServicesByLocation>? Every time client moves?
 - Similar problem with <findService>, solved by serviceBoundary: area, for which a mapping of a particular service is valid for
- Proposed Solution: **serviceListBoundary**
 - Solves what serviceBoundary does for findService

Use Case



Use Case

ServiceList:
urn:service:sos.ambulance
urn:service:sos.mountainrescue

Mountain Rescue
Service Boundary



Location B

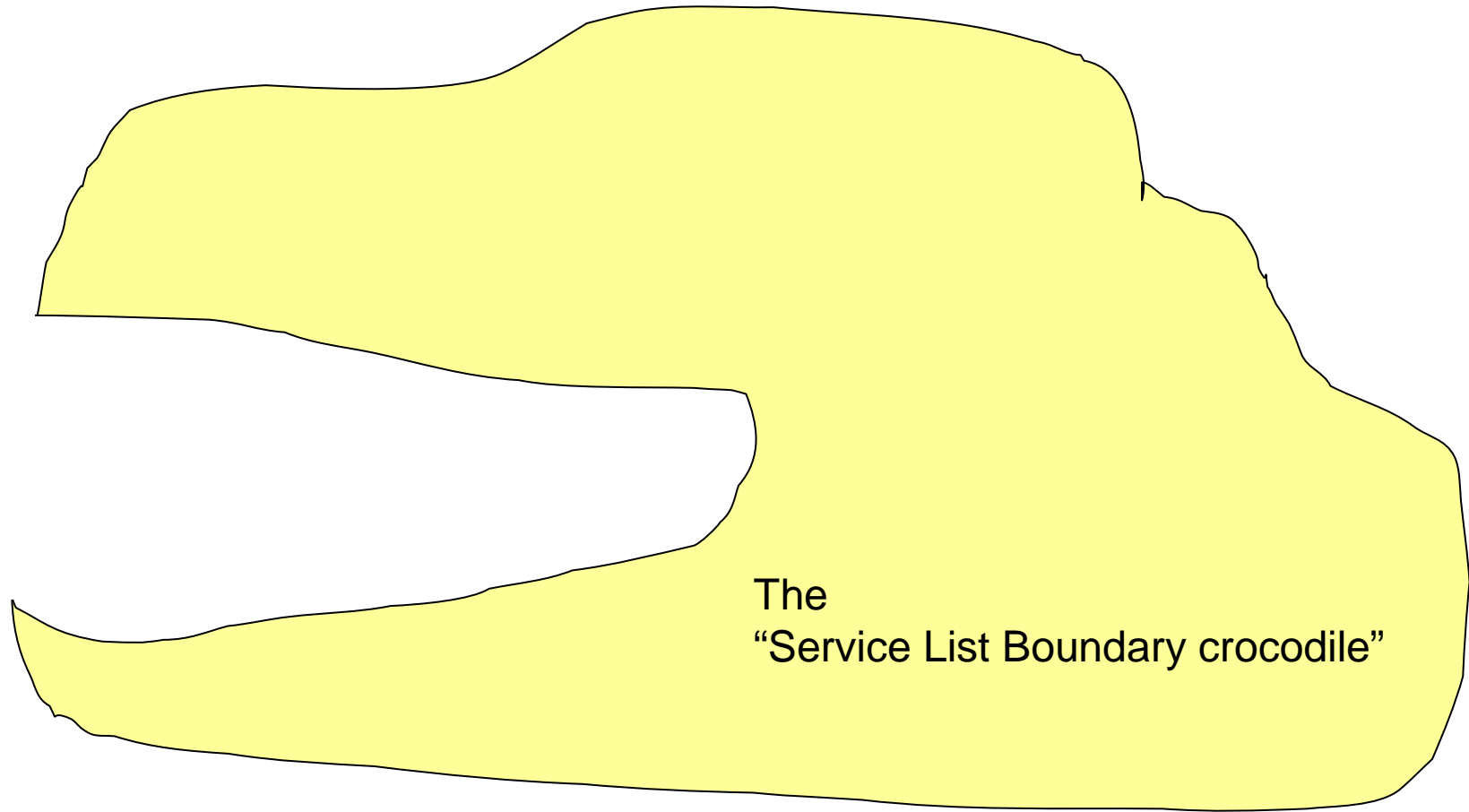
Location A

Ambulance Service Boundary

Proposal: serviceListBoundary

- Indicates a region within which all `<listServicesByLocation>` queries result in the same service list
- `ServiceListBoundary` is independent of the `serviceBoundary`
 - Server can apply “GIS set theory” to calculate it based on `serviceBoundaries`
- Integration into LoST similar to `serviceBoundary`

Example



The
"Service List Boundary crocodile"

Example

Request:

<listServicesByLocation>

<serviceListBoundary>value</serviceListBoundary>

Response:

<listServicesByLocationResponse>

<ServiceList> urn:service:sos.ambulance </ServiceList>

<serviceListBoundary>

<civicAddress>

<country>AT</country>

<A1>Vienna</A1>

</civicAddress>

</serviceListBoundary>

Next Steps

- Questions?

karlheinz.wolf @ nic.at